

Landscape Horticulture





The landscape industry has seen increased consumer demand for professional landscape services.

This 120-hour program provides the core skills required for employment in this growing industry, as well as upgrading for those currently involved with the various phases of landscape horticulture.

Persons with responsibilities for administering landscape construction or maintenance contracts will also find the program beneficial.

The Landscape Horticulture Certificate program also provides a solid foundation for individuals interested in pursuing advanced studies in specialized horticulture disciplines such as turf grass maintenance, landscape design, and nursery propagation.



Program Highlights

Botany and Soil Science

Plant Identification

Landscape Design and Construction

Landscape Maintenance

Meet our Instructors



JEANETTE MERRICK
ISA CERTIFIED ARBORIST



ERIC REYNARD
LANDSCAPE ARCHITECT





FAQ's

How do I apply

- www.okanagan.bc.ca/apply
- \$30 app fee
- No admission requirements
- Pay your deposit
- Tuition due 3 weeks before start of program

Where can I get a Job

- Landscape maintenance companies
- Nurseries
- Golf courses
- Municipalities
- School district
- Specialty: Entrepreneur/business owner

How much can I get paid

- Average \$18-30/hr
- Specialty/Consulting \$45-90/hr

Is it seasonal?

- Indoor & Outdoor duties vary depending on region / weather type
 - May be other duties in off season
 - (snowplowing, prep, etc)

WorkBC Centre

- ✓ Help to create your resume
- ✓ Workshops to increase employability
- ✓ Support through the job search process
- ✓ Job development services

Skills Enhancement Training & Certifications

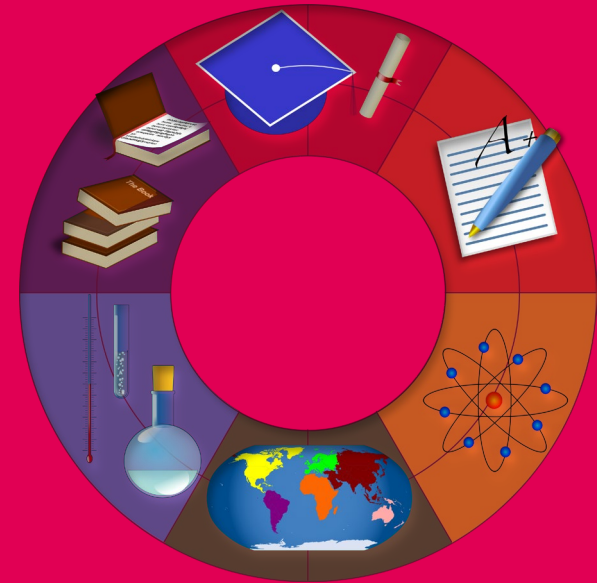
Work BC supports job seekers and employers with several programs and services to suit their needs.

- Need a certificate or training to help get you the job?
- Just finished training and don't have experience?

If you are considering training and are requiring supports
Sign up for services at:
apply.workbc.ca

STUDENT RESOURCES:

- [Accessibility Services](#)
- [Education Advising](#)
- [Counseling Services](#)
- [Careers Hub](#)
- [Financial Aid and Awards](#)
- [Indigenous Services](#)
- [Success Centres](#)
- [Library](#)



WHERE IS IT OFFERED?

Kelowna Full -time online hybrid, Mon to Fri, 9:30 am - 1:30 pm

Kelowna Part time - Tue & Thu evenings, face-to-face, 6-9pm plus frequent Sat.

Penticton: not currently offered

Salmon Arm Part-time. Face-to-face. Tue & Thu, 6:30-9:30 p.m. plus some Saturdays.

Vernon Part-time. Face-to-face. Tue & Thu, 6:30-9:30 p.m. plus some Saturdays

WHAT DOES IT COST?

Tuition

- \$\$1,362.39 (2023)*

Materials

- Appropriate clothing for field trips

Textbooks

- \$28+tax*

Tech

- Laptop or desktop, webcam, mic

WorkBC Centre

- ✓ Help to create your resume
- ✓ Workshops to increase employability
- ✓ Support through the job search process
- ✓ Job development services

Skills Enhancement Training & Certifications

Work BC supports job seekers and employers with several programs and services to suit their needs.

- Need a certificate or training to help get you the job?
- Just finished training and don't have experience?

If you are considering training and are requiring supports
Sign up for services at:
apply.workbc.ca

Employment Opportunities



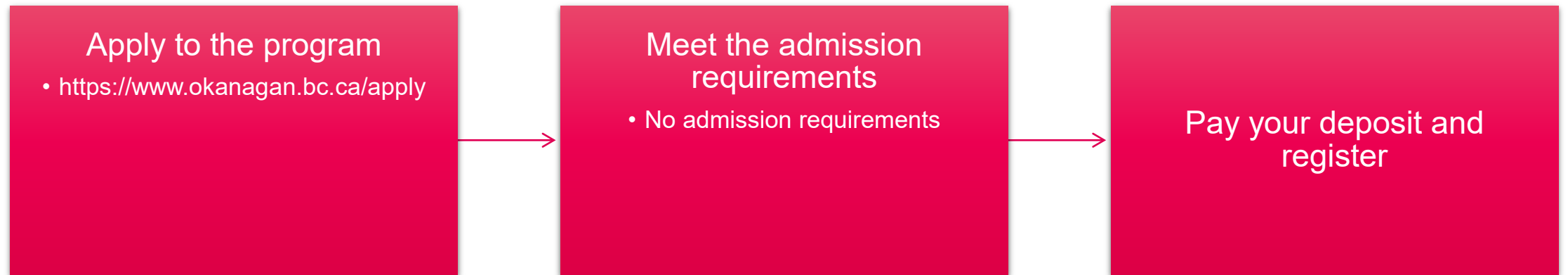
This Photo by Unknown Author is licensed under [CC BY-NC-ND](#)



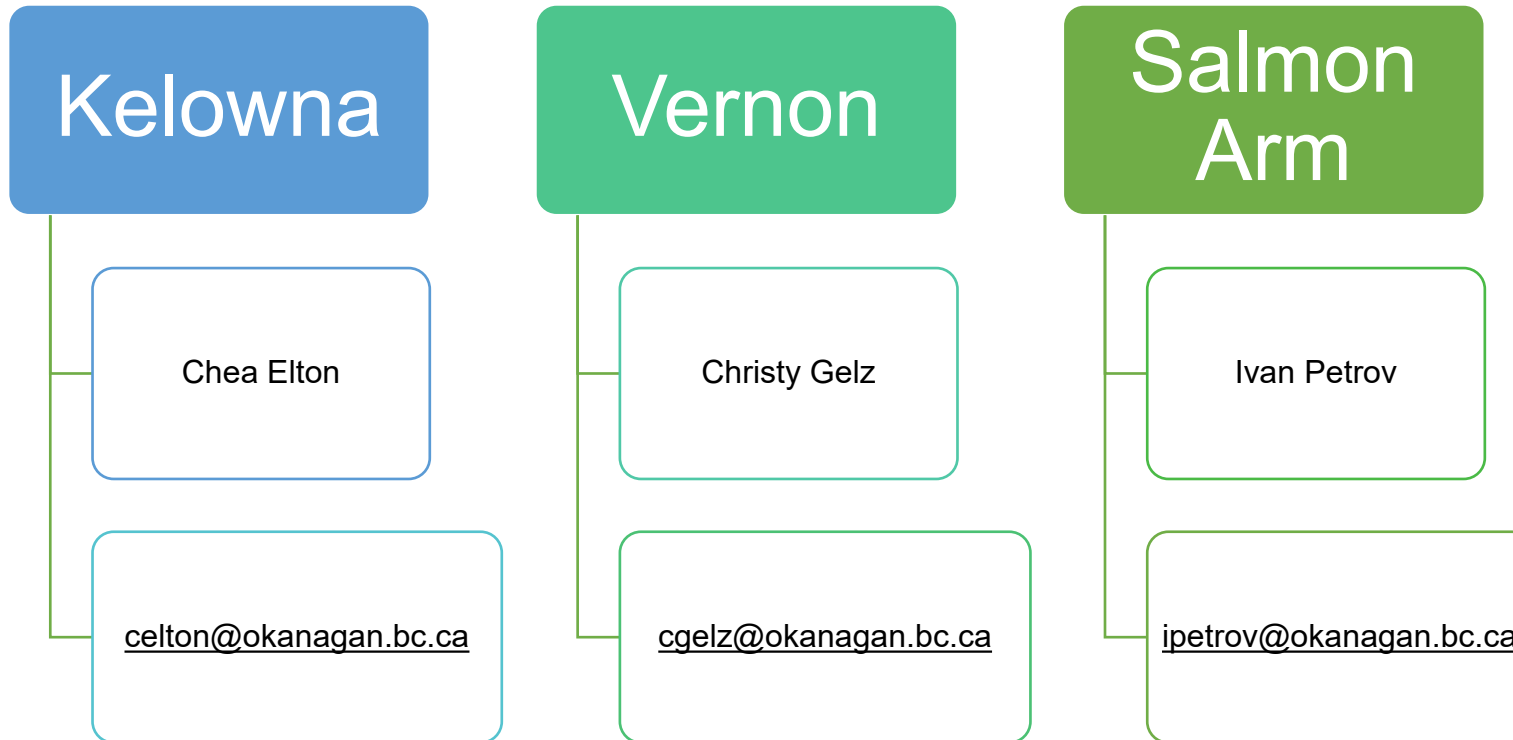
This Photo by Unknown Author is licensed under [CC BY-SA-NC](#)



NEXT STEPS



FOR MORE INFO



Kelowna Campus



Pentticton Campus



The JIM PATTISON
Centre of Excellence

Salmon Arm Campus



Vernon Campus

