

Fall 2017 Demographics Report

Summary

Institutional Research creates a fall demographics report from Banner in late November of each year, following the last stable enrolment date. The purpose of the report is to provide annual information on student enrolment at the college. This fall, there were 6,900* students enrolled in Academic and Vocational Programs.

Some notes about the report

- For the purpose of yearly comparison, the same methodology is used each year.
- This report does not include Continuing Studies students due to differences in methodology and definitions.
- Reports are posted on the IR website in a masked format, whereby data with totals less than five are suppressed for privacy as per the Ministry of Education guidelines.
- Full-time refers to a course load of 80 per cent, rounded up where applicable.
- Only students who have registrations in the fall term are included. Students who are block registered in a program that overlaps the fall term are excluded.

Demographic Statistics at a Glance:

- Fall 2017 headcount is 6,900*, up from 6,477 last year.
- 32% of students (2186) were new to Okanagan College.
- 57% of students study full-time.
- 69% of students attend the Kelowna campus.
- The average student age is 25.
- 52% of students are female.
- 67% of Okanagan College students are less than 25 years of age.
- 28% of all students are under 20.
- The Salmon Arm campus has the oldest students with an average age of 27.
- There were 14 exchange students from Okanagan College in Fall 2017, studying abroad.
- There were 31 exchange students from abroad, studying at Okanagan College.

* Total includes 29 students with unspecified gender

Headcount By Age, Gender, and Campus

	Kelowna	Vernon	Penticton	Salmon Arm	Distance Education	Exchange from OC	Total	Percent	Average Age
Under 20									
Female	628	143	131	53	28	0	983	50.4%	18.3
Male	715	113	84	44	10	0	966	49.6%	18.3
Subtotal	1343	256	215	97	38	0	1949	28.4%	18.3
20 to 24									
Female	893	135	130	55	81	5	1299	49.5%	21.5
Male	1082	87	97	29	24	6	1325	50.5%	21.6
Subtotal	1975	222	227	84	105	11	2624	38.2%	21.6
25 to 29									
Female	277	51	54	26	73	1	482	48.7%	26.7
Male	404	26	44	14	18	1	507	51.3%	26.6
Subtotal	681	77	98	40	91	2	989	14.4%	26.7
30 to 34									
Female	145	33	26	13	51	1	269	56.0%	31.8
Male	161	13	28	3	6	0	211	44.0%	31.8
Subtotal	306	46	54	16	57	1	480	7.0%	31.8
35 to 39									
Female	93	22	22	16	39	0	192	61.5%	36.9
Male	86	9	16	2	7	0	120	38.5%	36.9
Subtotal	179	31	38	18	46	0	312	4.5%	36.9
40 to 44									
Female	64	15	17	14	31	0	141	70.1%	42.0
Male	40	9	5	3	3	0	60	29.9%	41.6
Subtotal	104	24	22	17	34	0	201	2.9%	41.9
45 to 49									
Female	48	13	10	9	18	0	98	67.6%	46.6
Male	34	6	2	3	2	0	47	32.4%	46.9
Subtotal	82	19	12	12	20	0	145	2.1%	46.7
50+									
Female	49	15	21	14	25	0	124	72.9%	55.6
Male	28	8	6	2	2	0	46	27.1%	57.5
Subtotal	77	23	27	16	27	0	170	2.5%	56.1
Total Female	2197	427	411	200	346	7	3588	52.2%	25.6
Total Male*	2550	271	282	100	72	7	3282	47.8%	23.9
Grand Total	4747	698	693	300	418	14	6870	100.0%	24.8

*1 male excluded from total due to unspecified age

Headcount By Gender and Region

British Columbia				
Okanagan	Female	Male	Total	Percent
Kelowna	1109	1092	2201	32.03%
Vernon	361	292	653	9.50%
Penticton	280	218	498	7.25%
West Kelowna	254	221	475	6.91%
Salmon Arm	134	90	224	3.26%
Lake Country	82	64	146	2.12%
Summerland	70	56	126	1.83%
Coldstream	66	56	122	1.78%
Armstrong	57	43	100	1.46%
Oliver	35	31	66	0.96%
Enderby	32	19	51	0.74%
Peachland	30	20	50	0.73%
Westbank	24	19	43	0.63%
Revelstoke	30	12	42	0.61%
Osoyoos	17	21	38	0.55%
Lumby	16	11	27	0.39%
Okanagan Falls	14	12	26	0.38%
Kaleden	13	8	21	0.31%
Keremeos	14	8	22	0.32%
Sicamous	10	9	19	0.28%
Sorrento	13	6	19	0.28%
Other Okanagan	56	37	93	1.35%
Okanagan Total	2717	2345	5062	73.67%
Thompson Rivers				
Kamloops	17	20	37	0.54%
Williams Lake	3	7	10	0.15%
Other Thompson Rivers	23	15	38	0.55%
Thompson Rivers Total	43	42	85	1.24%
Selkirk				
Castlegar	9	7	16	0.23%
Nelson	7	8	15	0.22%
Other Selkirk	40	37	77	1.12%
Selkirk Total	47	45	92	1.34%
Kwantlen				
Surrey	15	15	30	0.44%
Langley	1	9	10	0.15%
Other Kwantlen	3	10	13	0.19%
Kwantlen Total	19	34	53	0.77%

Headcount By Gender and Region

Other BC Regions				
New Caledonia	14	31	45	0.65%
Northwest	15	30	45	0.65%
Fraser Valley	17	25	42	0.61%
Northern Lights	18	20	38	0.55%
Rockies	14	19	33	0.48%
Camosun	13	18	31	0.45%
Capilano	10	16	26	0.38%
Malaspina	8	14	22	0.32%
North Island	8	14	22	0.32%
Douglas	10	11	21	0.31%
Vancouver	6	14	20	0.29%
Other BC Regions Total	133	212	345	5.02%
British Columbia Total	2959	2678	5637	82.04%
Other Provinces				
Alberta	Female	Male	Total	Percent
Calgary	16	19	35	0.51%
Edmonton	16	7	23	0.33%
Other Alberta	45	58	103	1.50%
Alberta Total	77	84	161	2.34%
Ontario	23	25	48	0.70%
Saskatchewan	17	11	28	0.41%
Yukon	7	6	13	0.19%
Manitoba	6	5	11	0.16%
Northwest Territories	5	4	9	0.13%
Nova Scotia	3	2	5	0.07%
Quebec	3	1	4	0.06%
Newfoundland		1	1	0.01%
Other Provinces Total	141	139	280	4.08%
Domestic Total	3100	2817	5917	86.12%
International Total	488	466	954	13.88%
Grand Total	3588	3283	6871	100.00%

Students New to Okanagan College

	Status	Female	Male	Total	% Female	Avg. Age	Intl Total	Std. Deviation
Kelowna	FT	413	554	967	42.7%	21.6	88	6.1
	PT	292	212	504	57.9%	22.6	222	7.5
	Subtotal	705	766	1471	47.9%	21.9	310	6.6
Vernon	FT	74	77	151	49.0%	21.1	4	6.8
	PT	61	49	110	55.5%	24.0	8	8.3
	Subtotal	135	126	261	51.7%	22.3	12	7.6
Penticton	FT	92	52	144	63.9%	21.5	10	6.4
	PT	57	41	98	58.2%	21.8	11	5.9
	Subtotal	149	93	242	61.6%	21.6	21	6.2
Salmon Arm	FT	24	18	42	57.1%	20.4	1	6.0
	PT	26	23	49	53.1%	24.3	0	11.8
	Subtotal	50	41	91	54.9%	22.5	1	9.7
Distance Education	FT	8	2	10	80.0%	26.0	0	7.2
	PT	97	14	111	87.4%	28.0	0	9.0
	Subtotal	105	16	121	86.8%	27.8	0	8.9
Total Full Time		611	703	1314	46.5%	21.5	103	6.2
Total Part Time		533	339	872	61.1%	23.4	241	8.1
Grand Total		1144	1042	2186	52.3%	22.3	344	7.1

Students New to Okanagan College and Under 19 Years of Age

	Status	Female	Male	Total	% Female	Avg. Age	Intl Total	Std. Deviation
Kelowna	FT	150	219	369	40.7%	17.7	16	0.5
	PT	66	76	142	46.5%	17.8	39	0.4
	Subtotal	216	295	511	42.3%	17.7	55	0.5
Vernon	FT	34	46	80	42.5%	17.7	0	0.5
	PT	16	17	33	48.5%	17.6	1	0.7
	Subtotal	50	63	113	44.2%	17.6	1	0.5
Penticton	FT	40	22	62	64.5%	17.7	1	0.5
	PT	22	12	34	64.7%	17.6	3	0.5
	Subtotal	62	34	96	64.6%	17.7	4	0.5
Salmon Arm	FT	11	10	21	52.4%	17.5	0	0.5
	PT	8	6	14	57.1%	17.8	0	0.4
	Subtotal	19	16	35	54.3%	17.6	0	0.5
Distance Education	FT	0	1	1	0.0%	18.0	0	
	PT	13	1	14	92.9%	17.5	0	0.7
	Subtotal	13	2	15	86.7%	17.5	0	0.6
Total Full Time		235	298	533	44.1%	17.7	17	0.5
Total Part Time		125	112	237	52.7%	17.7	43	0.5
Grand Total		360	410	770	46.8%	17.7	60	0.5

Total Student Population								
	Status	Female	Male	Total	% Female	Avg. Age	Intl	Std.
							Total	Deviation
Kelowna	FT	1226	1760	2986	41.1%	23.2	371	6.5
	PT	971	791	1762	55.1%	25.5	520	8.9
	Subtotal	2197	2551	4748	46.3%	24.1	891	7.5
Vernon	FT	225	157	382	58.9%	22.7	10	7.9
	PT	202	114	316	63.9%	27.2	9	10.7
	Subtotal	427	271	698	61.2%	24.8	19	9.5
Penticton	FT	207	167	374	55.3%	24.1	16	8.1
	PT	204	115	319	63.9%	26.7	14	10.2
	Subtotal	411	282	693	59.3%	25.3	30	9.2
Salmon Arm	FT	108	45	153	70.6%	25.4	2	9.7
	PT	92	55	147	62.6%	28.0	1	12.5
	Subtotal	200	100	300	66.7%	26.7	3	11.2
Distance Education	FT	27	13	40	67.5%	28.4	0	9.0
	PT	319	59	378	84.4%	30.9	7	10.4
	Subtotal	346	72	418	82.8%	30.7	7	10.3
Exchange from OC	FT	0	0	0			0	
	PT	7	7	14	50.0%	22.8	1	3.2
	Subtotal	7	7	14	50.0%	22.8	1	3.2
Total Full Time		1793	2142	3935	45.6%	23.4	399	7.0
Total Part Time		1795	1141	2936	61.1%	26.6	552	9.8
Grand Total		3588	3283	6871	52.2%	24.8	951	8.5

Exchange Student Population							Std.
	Status	Female	Male	Total	% Female	Avg. Age	Deviation
Exchange from OC	FT	0	0	0			
	PT	7	7	14	50.0%	22.8	3.2
	Subtotal	7	7	14	50.0%	22.8	3.2
Exchange to OC	FT	21	4	25	84.0%	21.0	1.6
	PT	3	3	6	50.0%	23.3	3.5
	Subtotal	24	7	31	77.4%	21.4	2.2
Total Full Time		21	4	25	84.0%	21.0	1.6
Total Part Time		10	10	20	50.0%	23.0	3.2
Grand Total		31	14	45	68.9%	24.8	8.5

Headcount and Average Age By Program - All Students

Arts and Foundational							
Arts	Status	Female	Male	Total	% Female	Avg Age	Intl Total
Advanced Certificate in Communication	PT	1	1	2	50.0%	26.0	1
Arts University Transfer	FT	303	142	445	68.1%	21.1	54
	PT	366	179	545	67.2%	25.6	52
	Subtotal	669	321	990	67.6%	23.5	106
Communication, Culture and Journalism Studies	FT	10	10	20	50.0%	22.0	2
	PT	13	13	13	100.0%	26.8	4
	Subtotal	23	10	33	69.7%	23.9	6
Criminal and Social Justice	FT	63	45	108	58.3%	20.6	6
	PT	36	17	53	67.9%	24.2	5
	Subtotal	99	62	161	61.5%	21.8	11
Environmental Studies	FT	28	25	53	52.8%	21.8	8
	PT	15	9	24	62.5%	24.0	12
	Subtotal	43	34	77	55.8%	22.5	20
International Development Diploma	FT	7	2	9	77.8%	22.6	1
	PT	10	2	12	83.3%	27.3	6
	Subtotal	17	4	21	81.0%	25.3	7
Writing and Publishing	FT	17	8	25	68.0%	22.4	
	PT	12	8	20	60.0%	27.5	1
	Subtotal	29	16	45	64.4%	24.7	1
Arts Total		881	448	1329	66.3%	23.3	152
Foundational							
Adult Basic Education	FT	99	68	167	59.3%	26.0	1
	PT	367	217	584	62.8%	28.6	5
	Subtotal	466	285	751	62.1%	28.0	6
Adult Special Education	FT	8	10	18	44.4%	24.8	
	PT	46	31	77	59.7%	26.1	
	Subtotal	54	41	95	56.8%	25.8	
English as a Second Language	PT	157	91	248	63.3%	23.6	203
Foundational Total		677	417	1094	61.9%	26.8	209
Arts and Foundational Total		1558	865	2423	64.3%	24.9	361

Okanagan School of Business

Business	Status	Female	Male	Total	% Female	Avg Age	Intl Total
Bachelor of Business Administration	FT	293	322	615	47.6%	21.8	69
	PT	143	101	244	58.6%	28.1	27
	Subtotal	436	423	859	50.8%	23.6	96
Business Administration Diploma	FT	204	229	433	47.1%	22.0	133
	PT	162	156	318	50.9%	26.2	111
	Subtotal	366	385	751	48.7%	23.8	244
Business Administration Certificate	FT	4	11	15	26.7%	24.3	2
	PT	46	17	63	73.0%	32.9	5
	Subtotal	50	28	78	64.1%	31.3	7
Commercial Aviation	FT	1	30	31	3.2%	20.8	1
	PT		1	1	0.0%	21.0	
	Subtotal	1	31	32	3.1%	20.8	1
Post-Baccalaureate Diploma	FT	25	20	45	55.6%	26.1	29
	PT	34	16	50	68.0%	28.4	33
	Subtotal	59	36	95	62.1%	27.3	62
Business		912	903	1815	50.2%	24.2	410
Food, Wine and Tourism							
Culinary Arts Certificate	FT	4	7	11	36.4%	16.4	
	PT	6	12	18	33.3%	21.3	2
	Subtotal	10	19	29	34.5%	19.4	2
Culinary Management Diploma	FT	1	2	3	33.3%	19.7	1
	PT	2	1	3	66.7%	22.0	2
	Subtotal	3	3	6	50.0%	20.8	3
Pastry Arts	FT	15	3	18	83.3%	20.6	
Viticulture Technician	FT	5	3	8	62.5%	24.9	
Food, Wine and Tourism Total		33	28	61	54.1%	20.6	5
Office Administration							
Accounting/Bookkeeping Certificate	FT	18	5	23	78.3%	34.2	
	PT	18		18	100.0%	37.4	
	Subtotal	36	5	41	87.8%	35.6	
Administrative Assistant	FT	37		37	100.0%	34.6	
	PT	43	1	44	97.7%	33.3	
	Subtotal	80	1	81	98.8%	33.9	
BC Campus Online	PT	26		26	100.0%	32.5	
Legal Administrative Assistant	FT	21	1	22	95.5%	28.3	
	PT	16		16	100.0%	29.9	
	Subtotal	37	1	38	97.4%	28.9	
Office Assistant Certificate	FT	17	1	18	94.4%	27.9	
	PT	24		24	100.0%	32.9	
	Subtotal	41	1	42	97.6%	30.8	
Office Administration Total		220	8	228	96.5%	32.6	
Okanagan School of Business Total		1165	939	2104	55.4%	25.0	415

Headcount and Average Age By Program - All Students

Science, Technology and Health							
Science	Status	Female	Male	Total	% Female	Avg Age	Intl Total
Bachelor of Computer Information Systems	FT	8	74	82	9.8%	22.3	9
	PT	5	26	31	16.1%	26.0	3
	Subtotal	13	100	113	11.5%	23.3	12
Computer Information Systems	FT	9	48	57	15.8%	23.7	14
	PT	6	15	21	28.6%	27.9	6
	Subtotal	15	63	78	19.2%	24.8	20
Human Kinetics Diploma	FT	34	24	58	58.6%	20.9	1
	PT	22	9	31	71.0%	21.5	3
	Subtotal	56	33	89	62.9%	21.1	4
Science University Transfer	FT	111	133	244	45.5%	20.3	43
	PT	96	90	186	51.6%	21.6	44
	Subtotal	207	223	430	48.1%	20.9	87
Science Total		291	419	710	41.0%	21.7	123
Technologies							
Animation Diploma	FT	10	4	14	71.4%	21.0	
	PT						
	Subtotal	10	4	14	71.4%	21.0	
Civil Engineering Technology	FT	16	48	64	25.0%	23.4	1
	PT	5	34	39	12.8%	24.1	4
	Subtotal	21	82	103	20.4%	23.7	5
Electronic Engineering Technology	FT	4	44	48	8.3%	23.3	4
	PT	3	6	9	33.3%	21.7	3
	Subtotal	7	50	57	12.3%	23.0	7
Mechanical Engineering Technology	FT	3	46	49	6.1%	22.1	1
	PT		20	20	0.0%	25.2	
	Subtotal	3	66	69	4.3%	23.0	1
Network and Telecommunications Engineering Technology	FT	3	23	26	11.5%	23.5	2
	PT	7	32	39	17.9%	27.0	15
	Subtotal	10	55	65	15.4%	25.6	17
Sustainable Construction Management Technology	FT	6	10	16	37.5%	29.3	3
	PT						
	Subtotal	6	10	16	37.5%	29.3	3
Water Engineering Technology	FT	11	35	46	23.9%	24.9	
	PT	18	21	39	46.2%	28.8	3
	Subtotal	29	56	85	34.1%	26.7	3
Technologies Total		86	323	409	21.0%	24.5	36
Health and Social Development							
Bachelor of Science in Nursing	FT	36	10	46	78.3%	21.6	
	PT	5	1	6	83.3%	29.3	
	Subtotal	41	11	52	78.8%	22.5	
Certified Dental Assistant	FT	24		24	100.0%	25.8	
Early Childhood Education	FT	41	1	42	97.6%	25.6	4
	PT	2		2	100.0%	22.5	
	Subtotal	43	1	44	97.7%	25.5	4
Health Care Assistant	FT	71	12	83	85.5%	29.4	
	PT	3	1	4	75.0%	46.8	
	Subtotal	74	13	87	85.1%	30.2	
Human Service Work	FT	64	5	69	92.8%	26.4	1
	PT	27	6	33	81.8%	30.0	2
	Subtotal	91	11	102	89.2%	27.6	3
Practical Nursing	FT	41	1	42	97.6%	23.4	
	PT	39	6	45	86.7%	25.3	
	Subtotal	80	7	87	92.0%	24.4	
Therapist Assistant	FT	57	10	67	85.1%	23.4	7
	PT	10	2	12	83.3%	24.9	
	Subtotal	67	12	79	84.8%	23.7	7
Health and Social Development Total		420	55	475	88.4%	26.0	14
Science, Technology, Health and Social Development Total		797	797	1594	50.0%	23.7	173

Headcount and Average Age By Program - All Students

Trades and Apprenticeship							
Apprenticeship	Status	Female	Male	Total	% Female	Avg Age	Intl Total
Aircraft Maintenance Engineer	FT		16	16	0.0%	21.9	
	PT	4	10	14	28.6%	25.9	
	Subtotal	4	26	30	13.3%	23.7	
Automotive Painting and Refinishing	FT		13	13	0.0%	28.9	
Automotive Service Technician	FT	2	53	55	3.6%	25.0	
Carpenter	FT	10	64	74	13.5%	26.7	
Construction Craft Worker	FT	1	8	9	11.1%	33.3	
Cooking	FT	7	14	21	33.3%	26.8	
Domestic/Commercial Gasfitter	FT		5	5	0.0%	34.8	
Electrician	FT	5	119	124	4.0%	26.1	
Heavy Mechanical	FT	1	73	74	1.4%	24.7	
Motor Vehicle Body Repairer	FT		5	5	0.0%	29.8	
Plumbing and Piping Trades	FT	5	76	81	6.2%	28.4	
Recreation Vehicle Service Technician	FT	1	31	32	3.1%	32.1	
Refrigeration and Air Conditioning Mechanic	FT	1	25	26	3.8%	31.1	
Sheet Metal Worker	FT	3	21	24	12.5%	25.4	
Welding	FT	4	12	16	25.0%	23.5	
Apprenticeship Total		44	545	589	7.5%	26.8	0
Foundation							
Automotive Collision Repair/Painting & Refinishing	FT	6	11	17	35.3%	24.5	
Automotive Service Technician	FT	1	17	18	5.6%	19.8	
Carpenter and Joiner Foundation	FT	1	16	17	5.9%	24.4	
Electrician	FT	2	15	17	11.8%	18.9	
Heavy Mechanical	FT	4	32	36	11.1%	21.1	2
Recreation Vehicle Service Technician	FT	2	9	11	18.2%	28.2	
Studio Woodworking	FT	6	11	17	35.3%	31.2	
Welding	FT	2	24	26	7.7%	20.8	
	PT		2	2	0.0%	20.0	
	Subtotal	2	26	28	7.1%	20.8	
Foundation Total		24	137	161	14.9%	22.9	2
Trades and Apprenticeship Total		68	682	750	9.1%	26.0	2
Total Full Time		1793	2142	3935	45.6%	23.4	399
Total Part Time		1795	1141	2936	61.1%	26.6	552
Grand Total		3588	3283	6871	52.2%	24.8	951

Arts and Foundational							
Arts	Status	Female	Male	Total	% Female	Avg Age	St. Dev
Arts University Transfer	FT	120	60	180	66.7%	19.2	3.0
	PT	123	70	193	63.7%	21.9	7.2
	Subtotal	243	130	373	65.1%	20.6	5.7
Communication, Culture and Journalism Studies	FT	4	4	8	50.0%	22.3	6.4
	PT	5		5	100.0%	21.4	2.7
	Subtotal	9	4	13	69.2%	21.9	5.2
Criminal and Social Justice	FT	26	18	44	59.1%	19.3	3.5
	PT	6	2	8	75.0%	21.0	6.2
	Subtotal	32	20	52	61.5%	19.5	4.0
Environmental Studies	FT	8	8	16	50.0%	20.6	2.5
	PT	4	2	6	66.7%	25.5	8.3
	Subtotal	12	10	22	54.5%	21.9	5.1
International Development Diploma	FT	5		5	100.0%	20.2	4.5
	PT		1	1	0.0%	19.0	0.0
	Subtotal	5	1	6	83.3%	20.0	4.0
Writing and Publishing	FT	8	4	12	66.7%	19.8	2.8
	PT	3		3	100.0%	25.7	14.2
	Subtotal	11	4	15	73.3%	21.0	6.4
Arts Total		312	169	481	64.9%	20.6	5.5
Foundational							
Adult Basic Education	FT	37	27	64	57.8%	23.0	7.4
	PT	114	78	192	59.4%	25.3	9.6
	Subtotal	151	105	256	59.0%	24.7	9.1
Adult Special Education	FT	3	3	6	50.0%	19.3	2.3
	PT	10	7	17	58.8%	22.3	6.5
	Subtotal	13	10	23	56.5%	21.5	5.8
English as a Second Language	PT	99	53	152	65.1%	22.0	6.1
Foundational Total		263	168	431	61.0%	23.6	8.1
Arts and Foundational Total		575	337	912	63.0%	22.0	7.0

Okanagan School of Business

Business	Status	Female	Male	Total	% Female	Avg Age	St. Dev
Bachelor of Business Administration	FT	82	89	171	48.0%	19.5	2.7
	PT	12	20	32	37.5%	22.0	6.8
	Subtotal	94	109	203	46.3%	19.9	3.7
Business Administration Certificate	FT	2	5	7	28.6%	20.6	4.5
	PT	13	5	18	72.2%	27.6	6.9
	Subtotal	15	10	25	60.0%	25.6	7.0
Business Administration Diploma	FT	58	54	112	51.8%	20.8	4.6
	PT	17	30	47	36.2%	23.6	7.9
	Subtotal	75	84	159	47.2%	21.6	5.9
Commercial Aviation	FT		11	11	0.0%	20.4	3.0
Post-Baccalaureate Diploma	FT	5	5	10	50.0%	23.4	2.8
	PT	11	9	20	55.0%	26.2	8.9
	Subtotal	16	14	30	53.3%	25.2	7.5
Business		200	228	428	46.7%	21.3	5.4
Food, Wine and Tourism							
Culinary Arts Certificate	FT	4	6	10	40.0%	16.3	0.8
	PT	4	10	14	28.6%	21.4	8.7
	Subtotal	8	16	24	33.3%	19.3	7.1
Culinary Management Diploma	FT		1	1	0.0%	18.0	0.0
Pastry Arts	FT	14	3	17	82.4%	20.6	4.4
Viticulture Technician	FT	3	2	5	60.0%	26.0	6.0
Food, Wine and Tourism Total		25	22	47	53.2%	30.6	10.7
Office Administration							
Accounting/Bookkeeping Certificate	FT	6	2	8	75.0%	30.8	16.4
	PT	5		5	100.0%	36.4	8.9
	Subtotal	11	2	13	84.6%	32.9	13.9
Administrative Assistant	FT	16		16	100.0%	29.2	10.1
	PT	18		18	100.0%	30.8	11.0
	Subtotal	34		34	100.0%	30.1	10.5
BC Campus Online	PT	9		9	100.0%	31.8	10.7
Legal Administrative Assistant	FT	10		10	100.0%	28.2	7.4
	PT	8		8	100.0%	29.3	7.3
	Subtotal	18		18	100.0%	28.7	7.2
Office Assistant Certificate	FT	10	1	11	90.9%	27.6	10.6
	PT	7		7	100.0%	37.4	12.9
	Subtotal	17	1	18	94.4%	31.4	12.2
Office Administration Total		89	3	92	96.7%	30.6	10.7
Okanagan School of Business		314	253	567	55.4%	22.7	7.5

Science, Technology and Health

Science	Status	Female	Male	Total	% Female	Avg Age	St. Dev
Bachelor of Computer Information Systems	FT	2	25	27	7.4%	19.0	2.5
	PT		6	6	0.0%	22.5	5.2
	Subtotal	2	31	33	6.1%	19.6	3.3
Computer Information Systems	FT	6	15	21	28.6%	22.7	8.5
	PT		1	1	0.0%	19.0	0.0
	Subtotal	6	16	22	27.3%	22.5	8.3
Human Kinetics Diploma	FT	15	6	21	71.4%	19.3	1.6
	PT	4	3	7	57.1%	18.6	1.4
	Subtotal	19	9	28	67.9%	19.1	1.6
Science University Transfer	FT	42	52	94	44.7%	18.8	2.1
	PT	30	30	60	50.0%	19.4	3.1
	Subtotal	72	82	154	46.8%	19.0	2.5
Science Total		99	138	237	41.8%	19.4	3.6
Technologies							
Animation Diploma	FT	6	4	10	60.0%	19.5	2.5
Civil Engineering Technology	FT	11	17	28	39.3%	23.4	6.2
Electronic Engineering Technology	FT	1	19	20	5.0%	21.8	5.0
	PT		1	1	0.0%	17.0	0.0
	Subtotal	1	20	21	4.8%	21.6	5.0
Mechanical Engineering Technology	FT	1	21	22	4.5%	20.5	3.7
Network and Telecommunications Engineering Technology	FT	1	14	15	6.7%	21.5	5.7
	PT	1	1	2	50.0%	28.0	14.1
	Subtotal	2	15	17	11.8%	22.2	6.8
Sustainable Construction Management Technology	FT	5	6	11	45.5%	28.5	9.6
Water Engineering Technology	FT	1	13	14	7.1%	25.1	5.1
	PT	2	1	3	66.7%	22.3	3.5
	Subtotal	3	14	17	17.6%	24.6	4.9
Technologies Total		29	97	126	23.0%	22.7	6.1
Health and Social Development							
Bachelor of Science in Nursing	FT	9	1	10	90.0%	18.7	2.3
Certified Dental Assistant	FT	3		3	100.0%	20.7	2.1
Early Childhood Education	FT	11		11	100.0%	24.6	6.8
Health Care Assistant	FT	21	4	25	84.0%	27.5	9.4
Human Service Work	FT	18	1	19	94.7%	22.5	6.5
	PT	1		1	100.0%	28.0	0.0
	Subtotal	19	1	20	95.0%	22.8	6.4
Practical Nursing	FT	2		2	100.0%	23.0	1.4
	PT	24	2	26	92.3%	23.2	6.6
	Subtotal	26	2	28	92.9%	23.2	6.3
Therapist Assistant	FT	14	1	15	93.3%	22.6	5.5
	PT	1		1	100.0%	25.0	0.0
	Subtotal	15	1	16	93.8%	22.8	5.3
Health and Social Development Total		104	9	113	92.0%	23.7	7.1
Science, Technology, Health and Social Development Total		232	244	476	48.7%	21.3	5.6

Trades and Apprenticeship

Apprenticeship	Status	Female	Male	Total	% Female	Avg Age	St. Dev
Aircraft Maintenance Engineer	FT		13	13	0.0%	21.1	6.0
	PT	2	7	9	22.2%	24.2	9.7
	Subtotal	2	20	22	9.1%	22.4	7.7
Automotive Painting and Refinishing	FT		5	5	0.0%	30.0	7.2
Automotive Service Technician	FT	2	3	5	40.0%	26.4	4.2
Carpenter	FT	1	14	15	6.7%	24.5	4.6
Construction Craft Worker	FT		2	2	0.0%	25.0	0.0
Cooking	FT		4	4	0.0%	25.3	2.5
Domestic/Commercial Gasfitter	FT		1	1	0.0%	21.0	0.0
Electrician	FT	2	11	13	15.4%	26.8	5.5
Heavy Mechanical	FT		16	16	0.0%	25.1	7.6
Motor Vehicle Body Repairer	FT		2	2	0.0%	33.5	4.9
Plumbing and Piping Trades	FT	1	11	12	8.3%	25.4	6.3
Recreation Vehicle Service Technician	FT		13	13	0.0%	30.9	11.8
Refrigeration and Air Conditioning Mechanic	FT		3	3	0.0%	31.7	9.5
Sheet Metal Worker	FT		1	1	0.0%	23.0	0.0
Apprenticeship Total		8	106	114	7.0%	25.9	7.5
Foundation							
Automotive Collision Repair/Painting & Refinishing	FT	3	9	12	25.0%	22.5	5.4
Automotive Service Technician	FT		13	13	0.0%	19.2	3.2
Carpenter and Joiner Foundation	FT		9	9	0.0%	23.1	4.0
Electrician	FT	2	12	14	14.3%	18.9	2.1
Heavy Mechanical	FT	4	25	29	13.8%	20.9	5.1
Recreation Vehicle Service Technician	FT		7	7	0.0%	28.4	14.8
Studio Woodworking	FT	5	9	14	35.7%	33.4	19.0
Welding	FT	1	18	19	5.3%	20.3	3.1
Foundation Total		15	102	117	12.8%	22.6	9.3
Trades and Apprenticeship Total		23	208	231	10.0%	24.3	8.6
Total Full Time		611	703	1314	46.5%	21.5	6.2
Total Part Time		533	339	872	61.1%	23.4	8.1
Grand Total		1144	1042	2186	52.3%	22.3	7.1

Arts and Foundational

Arts	Kelowna	Vernon	Penticton	Salmon	Distance	Exchange	Total	Direct
				Arm	Education	from OC		from HS
Advanced Certificate in Communication	2						2	
Arts University Transfer	566	141	134	81	69	1	992	171
Communication, Culture and Journalism Studies	28	3	1		1		33	4
Criminal and Social Justice	69	14	75		3		161	31
Environmental Studies	71	4	1	1			77	5
International Development Diploma	20	1					21	2
Writing and Publishing	31	10	2		2		45	5
Arts Total	787	173	213	82	75	1	1331	218
Foundational								
Adult Basic Education	335	165	153	100			753	43
Adult Special Education	49	15	27	13			104	
English as a Second Language	248						248	10
Foundational Total	632	180	180	113	0	0	1105	53
Arts and Foundational Total	1419	353	393	195	75	1	2436	271

Okanagan School of Business

Business	Kelowna	Vernon	Penticton	Salmon	Distance	Exchange	Total	Direct
				Arm	Education	from OC		from HS
Bachelor of Business Administration	686	73	21	12	54	13	859	103
Business Administration Certificate	43	3	4	3	25		78	5
Business Administration Diploma	539	72	41	21	79		752	55
Commercial Aviation	32						32	4
Post-Baccalaureate Diploma	74	3	2		17		96	
Business Total	1374	151	68	36	175	13	1817	167
Food, Wine and Tourism								
Culinary Arts Certificate	30						30	5
Culinary Management Diploma	6						6	1
Pastry Arts	18						18	2
Viticulture Technician			8				8	
Food, Wine and Tourism Total	54	0	8	0	0	0	62	8
Office Administration								
Accounting/Bookkeeping Certificate	23				18		41	2
Administrative Assistant	14	15		14	38		81	1
BC Campus Online					26		26	
Legal Administrative Assistant	19				19		38	
Office Assistant Certificate	6	5	10	1	20		42	3
Office Administration Total	62	20	10	15	121	0	228	6
Okanagan School of Business Total	1490	171	86	51	296	13	2107	181

Headcount by Program and Campus

Science, Technology and Health

		Kelowna	Vernon	Penticton	Salmon Arm	Distance Education	Exchange from OC	Total	Direct from HS
Science									
	Bachelor of Computer Information Systems	98	9	6				113	17
	Computer Information Systems	77		1				78	7
	Human Kinetics Diploma	2	1	86				89	11
	Science University Transfer	281	84	38	23	5		431	103
Science Total		458	94	131	23	5	0	711	138
Technologies									
	Animation Diploma	14						14	4
	Civil Engineering Technology	103						103	9
	Electronic Engineering Technology	58						58	8
	Mechanical Engineering Technology	69						69	9
	Network and Telecommunications Engineering Technology	65						65	6
	Sustainable Construction Management Technology			16				16	
	Water Engineering Technology	85						85	2
Technologies Total		394	0	16	0	0	0	410	38
Health and Social Development									
	Bachelor of Science in Nursing	52						52	11
	Certified Dental Assistant	24						24	1
	Early Childhood Education	44						44	5
	Health Care Assistant	31	27	20	10			88	10
	Human Service Work	52	37		13			102	8
	Practical Nursing	28	1		17	41		87	15
	Therapist Assistant	79						79	5
Health and Social Development Total		310	65	20	40	41	0	476	55
Science, Technology, Health and Social Development Total		1162	159	167	63	46	0	1597	231

Headcount by Program and Campus

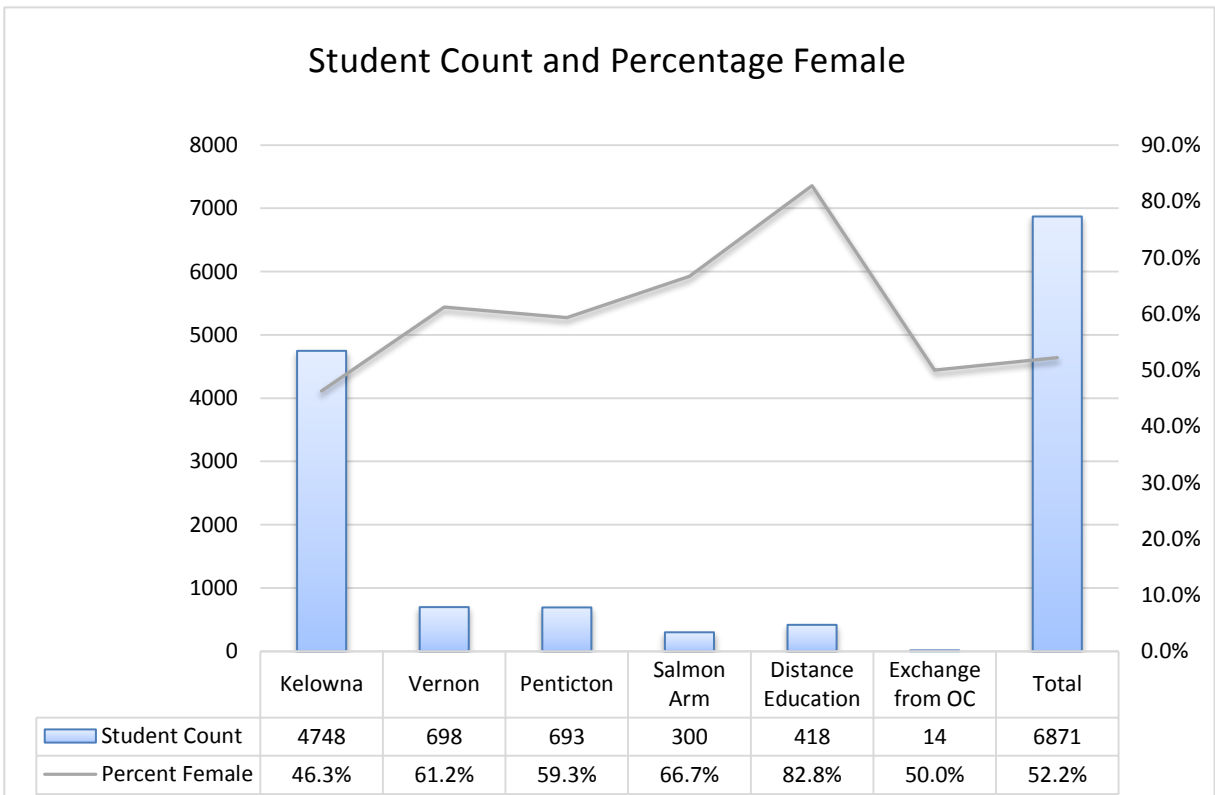
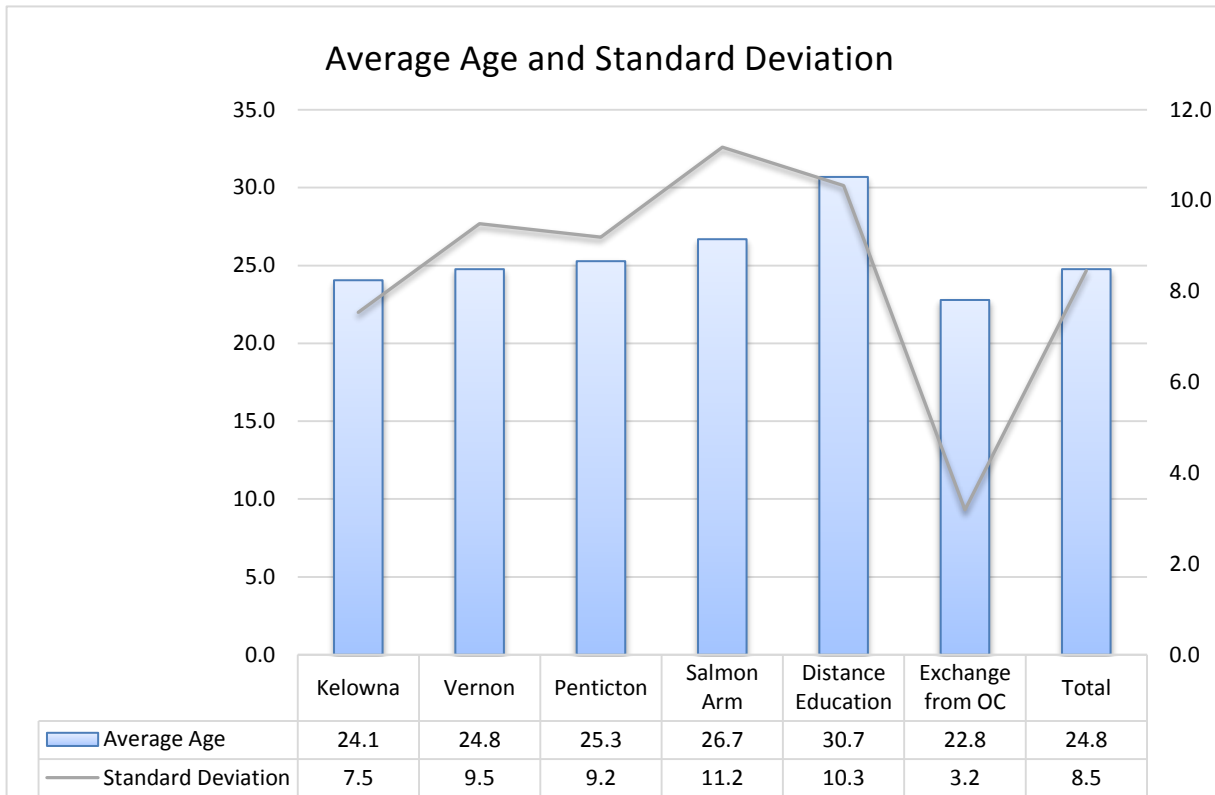
Trades and Apprenticeship									
		Kelowna	Vernon	Penticton	Salmon Arm	Distance Education	Exchange from OC	Total	Direct from HS
Apprenticeship									
	Aircraft Maintenance Engineer	14	16					30	5
	Automotive Painting and Refinishing	14						14	
	Automotive Service Technician	56						56	
	Carpenter	77						77	
	Construction Craft Worker	10						10	
	Cooking	20		1				21	1
	Domestic/Commercial Gasfitter	5						5	
	Electrician	103		22				125	
	Heavy Mechanical	75						75	
	Motor Vehicle Body Repairer	5						5	
	Plumbing and Piping Trades	81		1				82	
	Recreation Vehicle Service Technician	31				1		32	
	Refrigeration and Air Conditioning Mechanic	1		25				26	
	Sheet Metal Worker	25						25	
	Welding	16						16	
Apprenticeship Total		533	16	49	0	1	0	599	6
Foundation									
	Automotive Collision Repair/Painting & Refinishing	17						17	2
	Automotive Service Technician	18						18	7
	Carpenter and Joiner Foundation	17						17	2
	Electrician	17						17	7
	Heavy Mechanical	36						36	11
	Recreation Vehicle Service Technician	11						11	3
	Studio Woodworking	17						17	2
	Welding	28						28	10
Foundation Total		161	0	0	0	0	0	161	44
Trades and Apprenticeship Total		694	16	49	0	1	0	760	50
Grand Total		4765	699	695	309	418	14	6900	733

Headcount By Campus and High School

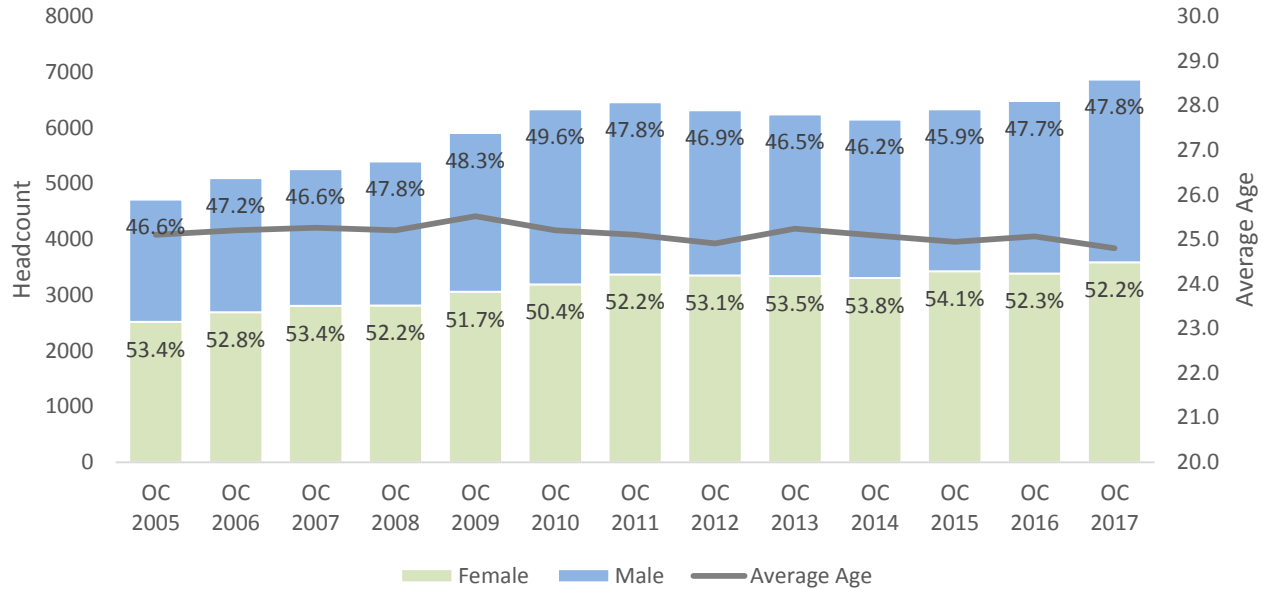
	Grade 12	New Grads	% New						Total OC Students
	2017 (A)	to OC (B)	Grads (B/A)	Kelowna	Vernon	Penticton	Salmon Arm	Distance Education	
23 Central Okanagan				<i>New Grads to OC</i>					
Kelowna Secondary School	595	71	11.9%	71					493
Mount Boucherie Senior Secondary	402	55	13.7%	51		3		1	394
Rutland Senior Secondary	341	72	21.1%	71		1			367
Okanagan Mission Secondary	225	45	20.0%	41	1	1		2	207
George Elliot Secondary	135	9	6.7%	7	1			1	101
OLD George Pringle Secondary									4
OLD Kelowna Secondary									2
OLD K L O Secondary									1
OLD Springvalley Secondary									2
Subtotal	1698	252	14.8%	241	2	5	0	4	1571
22 Vernon									
Vernon Secondary	205	24	11.7%	7	16			1	185
Clarence Fulton Secondary	153	30	19.6%	9	21				136
W L Seaton Secondary	145	31	21.4%	6	24	1			127
Kalamalka Secondary	122	23	18.9%	3	19		1		101
Charles Bloom Secondary	55	5	9.1%	3	2				35
OLD Charles Bloom Secondary									1
Subtotal	680	113	16.6%	28	82	1	1	1	585
67 Okanagan Skaha									
Penticton Secondary	328	38	11.6%	6		31		1	243
Princess Margaret Secondary	125	28	22.4%	5		22		1	129
Summerland Secondary	92	11	12.0%	5		5		1	107
Subtotal	545	77	14.1%	16	0	58	0	3	479
83 North Okanagan Shuswap									
Salmon Arm Secondary	270	42	15.6%	4			38		189
Pleasant Valley Secondary	113	21	18.6%	2	18		1		100
A L Fortune Secondary	44	1	2.3%				1		26
Eagle River Secondary	32	1	3.1%				1		14
Subtotal	459	65	14.2%	6	18	0	41	0	329
53 Okanagan Similkameen									
Southern Okanagan Secondary	105	8	7.6%	6		2			65
Osoyoos Secondary	45	6	13.3%	6					37
Similkameen Elem-Secondary	42	10	23.8%	4		6			30
Subtotal	192	24	12.5%	16	0	8	0	0	132
20 Kootenay Columbia									
J Lloyd Crowe Secondary	189	3	1.6%	2		1			30
Stanley Humphries Secondary	92	1	1.1%			1			18
OLD Rossland Secondary									3
Subtotal	281	4	1.4%	2	0	2	0	0	51
8 Kootenay Lake									
L V Rogers Secondary	177	1	0.6%	1					13
Prince Charles Secondary	107	1	0.9%	1					7
Mount Sentinel Secondary	56	1	1.8%	1					8
J V Humphries Elem-Secondary	21	0	0.0%						1
Crawford Bay Elem-Secondary	Msk	0							1
Subtotal	361	3	0.8%	3	0	0	0	0	30
19 Revelstoke									
Revelstoke Secondary	74	0	0.0%						21
51 Boundary									
Grand Forks Secondary School	61	3	4.9%	3					19
Boundary Central Secondary	31	3	9.7%	2		1			9
Subtotal	92	6	6.5%	5	0	1	0	0	28
58 Nicola Similkameen									
Merritt Secondary	107	0	0.0%						13
Princeton Secondary	40	2	5.0%	1		1			16
Subtotal	147	2	1.4%	1	0	1	0	0	29
Other Schools Total		187		149	16	10	6	6	3645
Grand Total	4529	546	12.1%	467	118	86	48	14	6900

New Grads are students that graduated high school between January and June 2017.

Grade 12 Class refers to the total number of students in grade 12 as per the Ministry of Education website (http://www.bced.gov.bc.ca/reporting/school_data_summary.php)



Male vs. Female and Average Age



Note: students are excluded where gender is unknown

New To Okanagan College and % Full Time

