

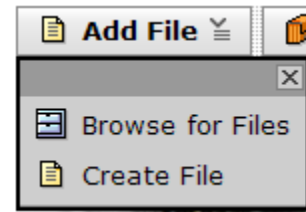
## Adding Files to a Blackboard course from your 300xxxxxx (EMP.OC) network drive.

There is a glitch that prevents Blackboard from finding your network drive if you try to select the desktop shortcut link.

If you navigate to My Computer, then to your 300xxxxxx (EMP.OC) network drive, it will work - after a 20-second pause.

Here's the process:

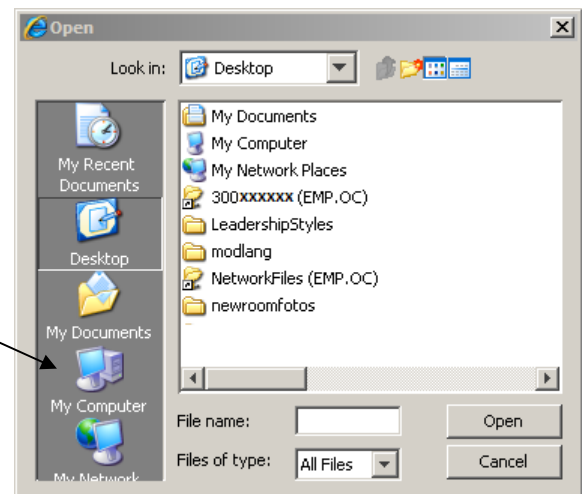
In your Blackboard CE 8 course section click Add File and pull down to Browse for Files.



Click the My Computer icon.



Instead of the desktop shortcut to your 300xxxxxx (EMP.OC) network files, click My Computer



Open this link to your 300xxxxxx (EMP.OC) network files, wait for about 20 seconds, and your files will appear.

