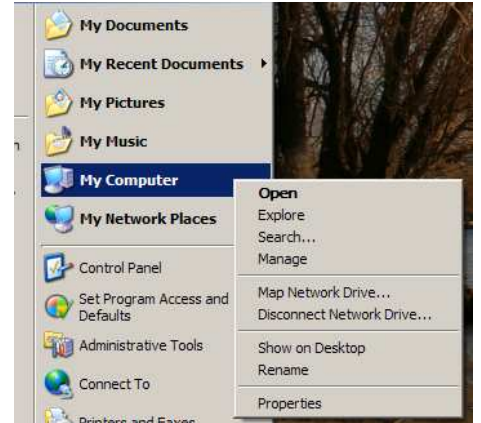


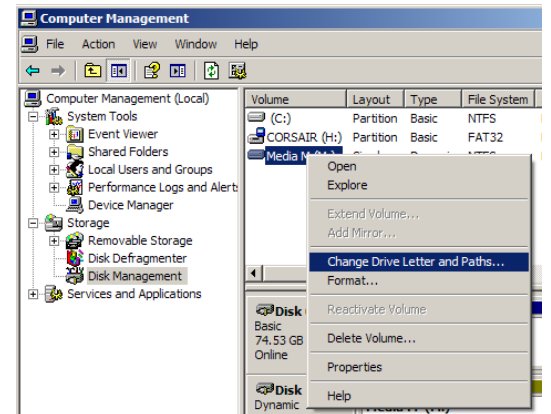
Installing software when you get an 'invalid drive F:' error message

1. Insert a USB memory stick and change it to drive F:
Here's how:

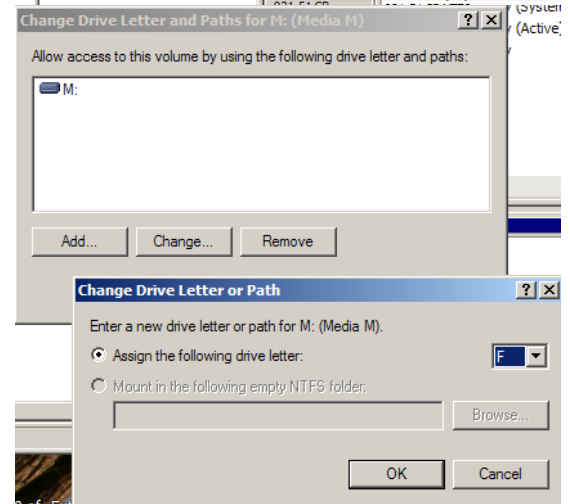
- a. Click Start,
then right-click on My Computer
and pull down to Manage



- b. Click Disk Management,
then right-click your USB stick
and pull down to Change Drive Letter



- c. Click Change and choose F: from the list.
Click OK



Try the install again.